

Farmington to Kingman

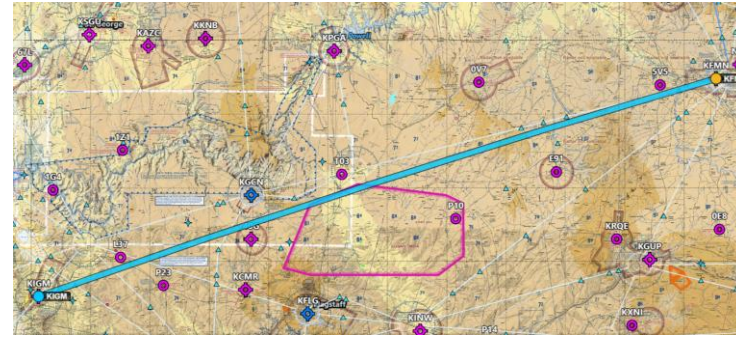
Delighting your passengers with a birds-eye view of Monument Valley, Lake Powell, and the Grand Canyon

Frank Chance

805-594-1871

The shortest distance between two points is... uninspiring.

Take the long way home.



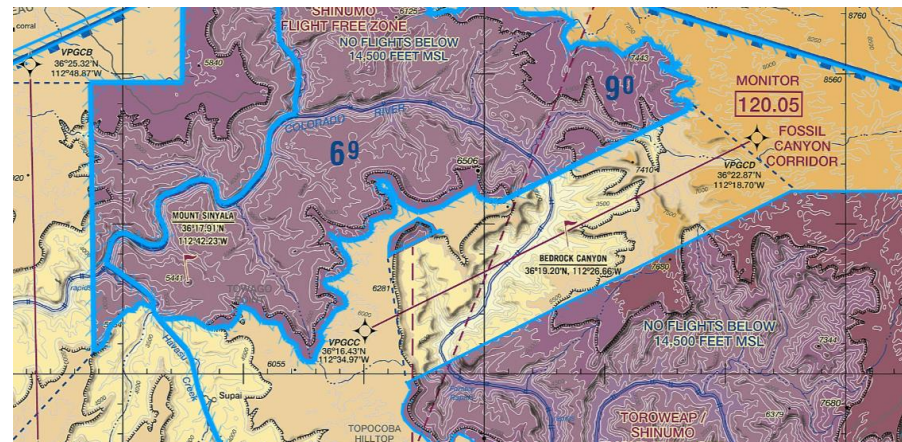
The VFR sectional does not do justice to this area.

It is packed with visual delights.



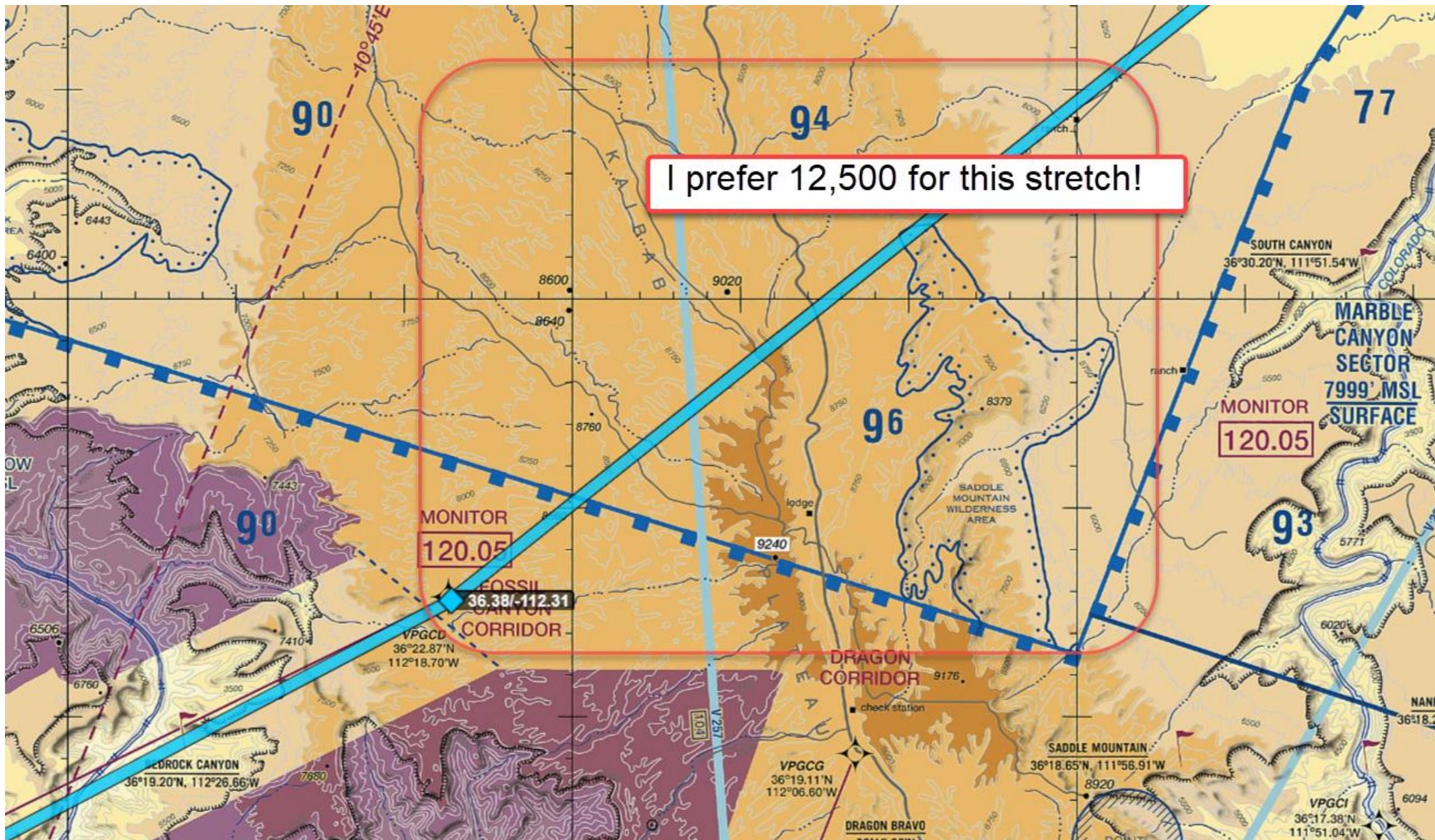
Don't be intimidated by the Grand Canyon Special Flight Rules Area.

The corridors are easy to navigate.



Take the long way. KFMN (Farmington) to KIGM (Kingman) is **320nm**.
Most of route can be flown at **10,500**. I like **12,500** for Kaibab Plateau.





I prefer 12,500 for this stretch!

MONITOR
120.05

MONITOR
120.05

POINT
36.38/-112.31

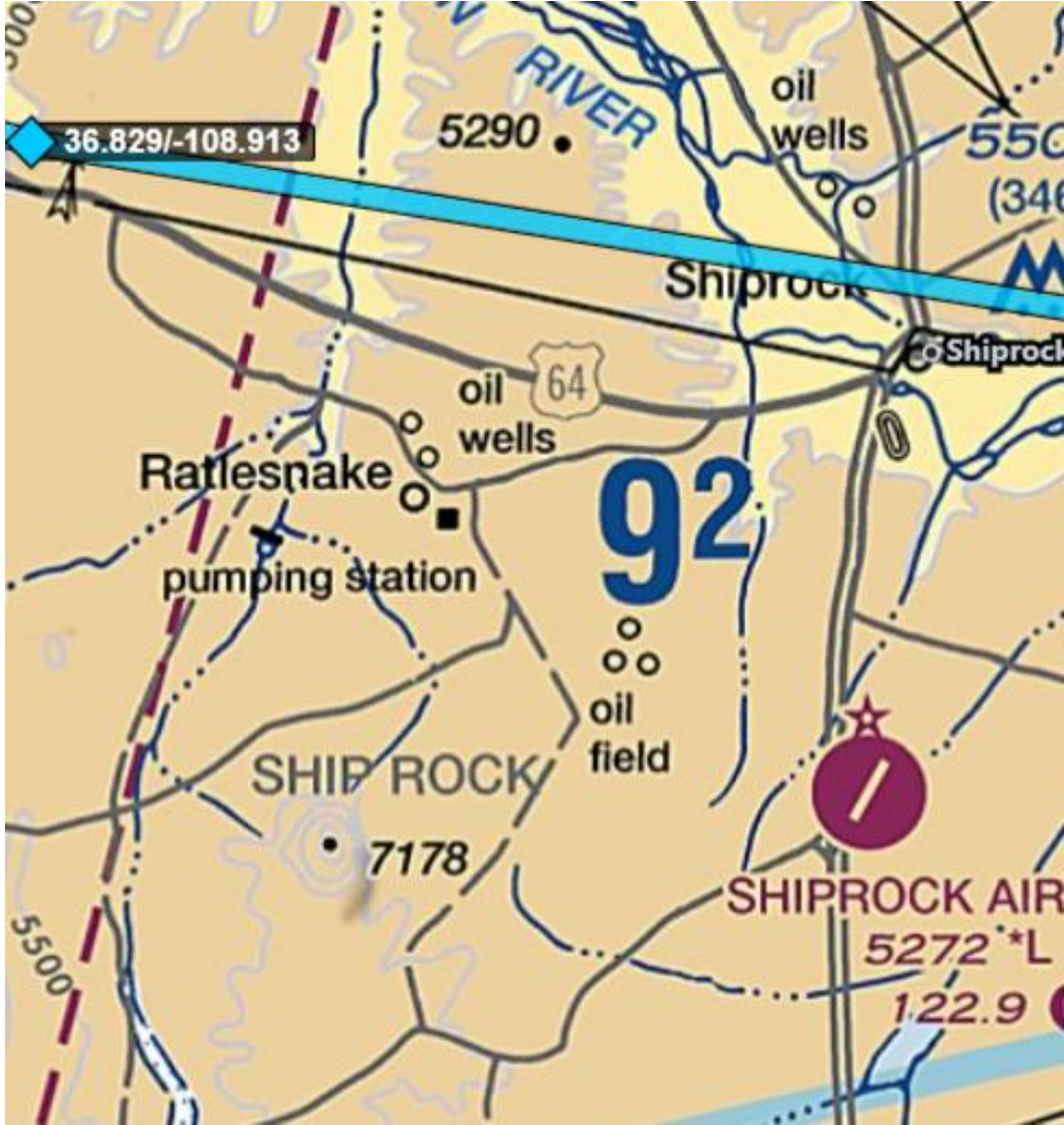
DRAGON CORRIDOR

MARBLE CANYON SECTOR
7999' MSL SURFACE

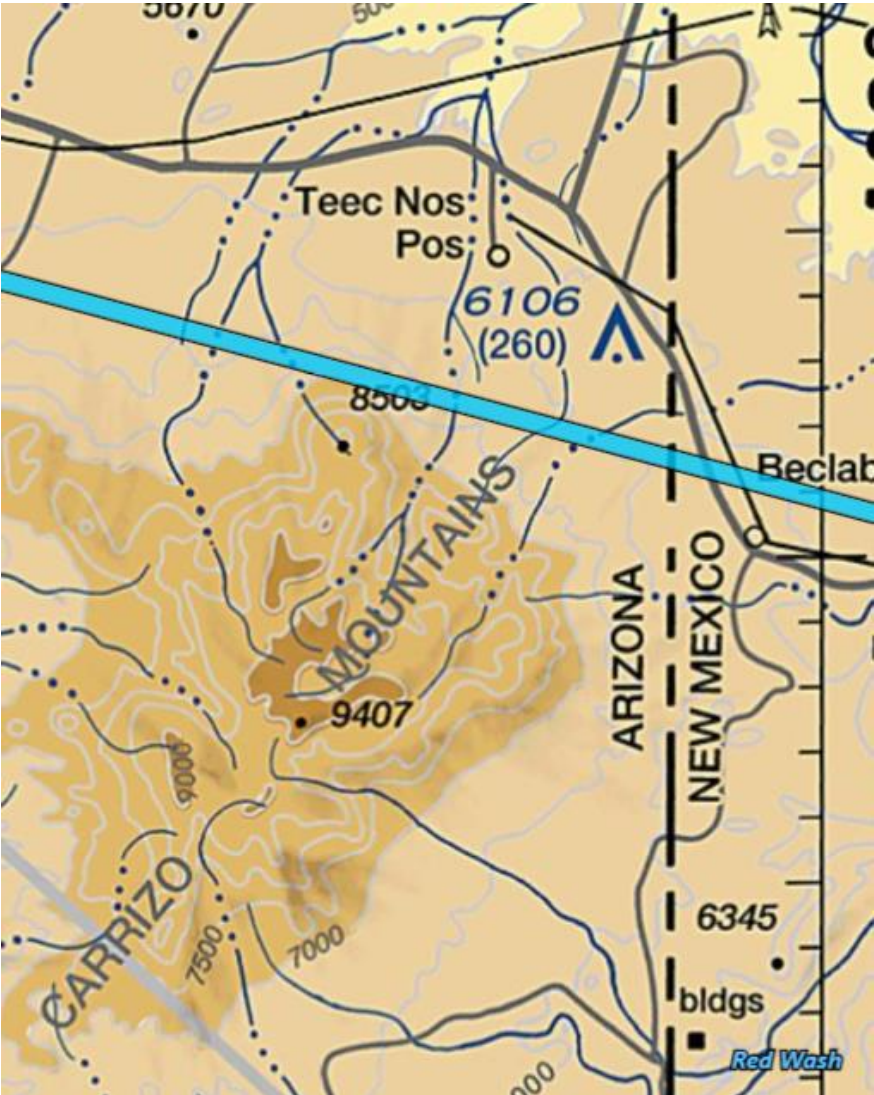
OW
IL

NAN

Ship Rock



Carrizo Mountains



Comb Ridge (I think!)



Monument valley



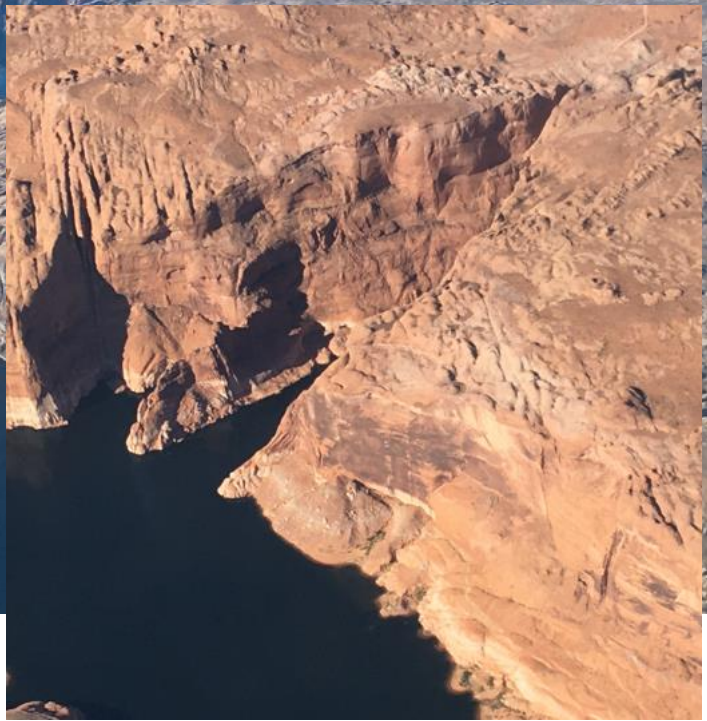
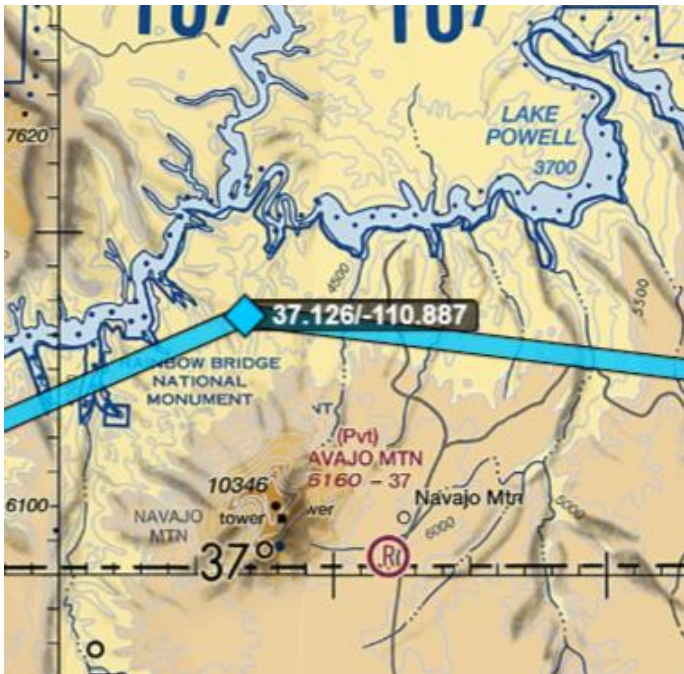
Monument valley



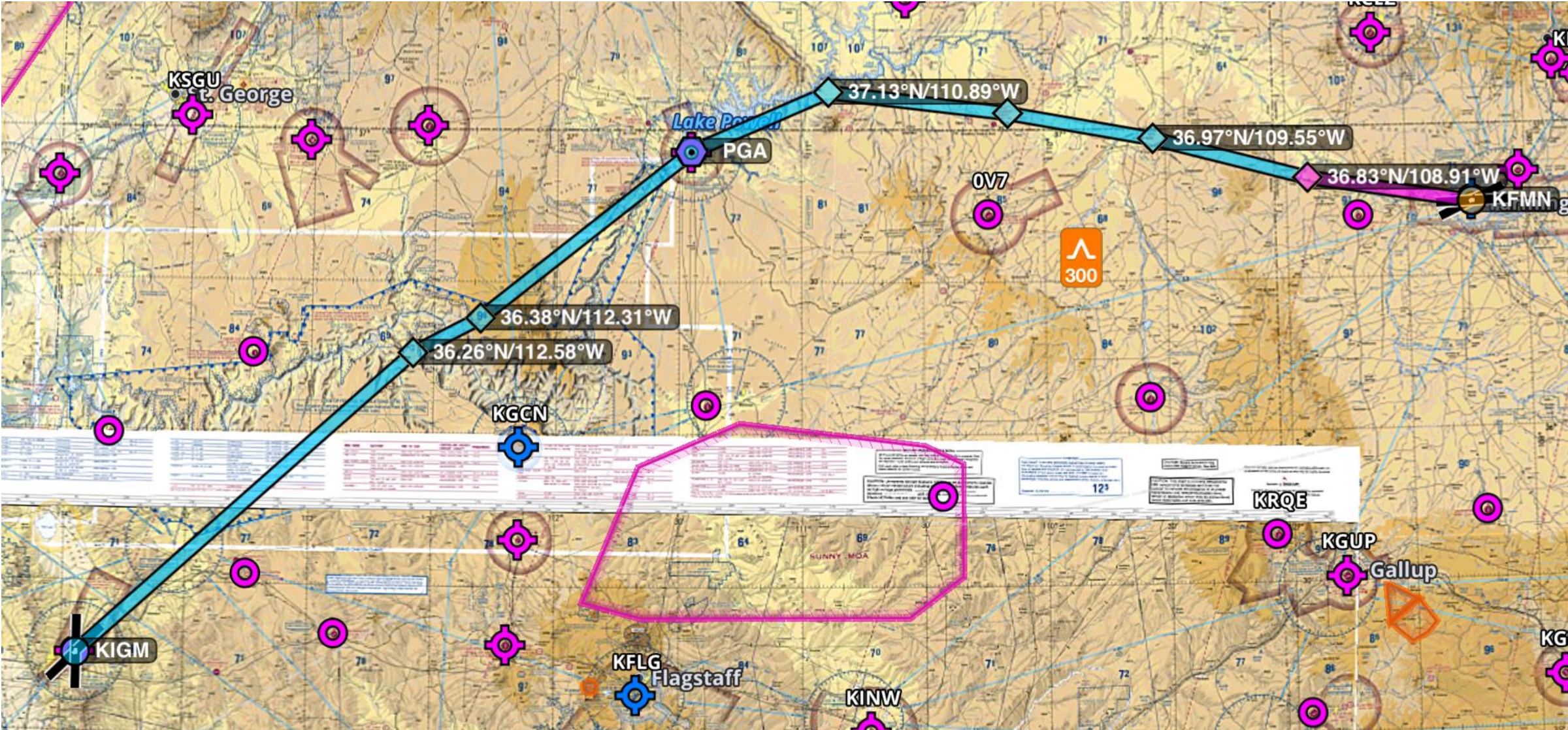
Goulding Trading Post Airport (land south, depart north!)



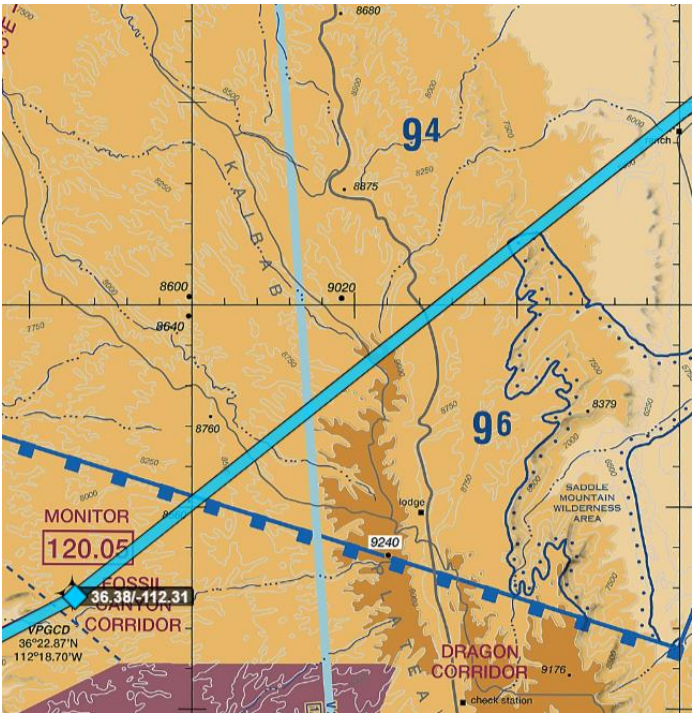
Navajo Mountain, Lake Powell, Hole in the Rock



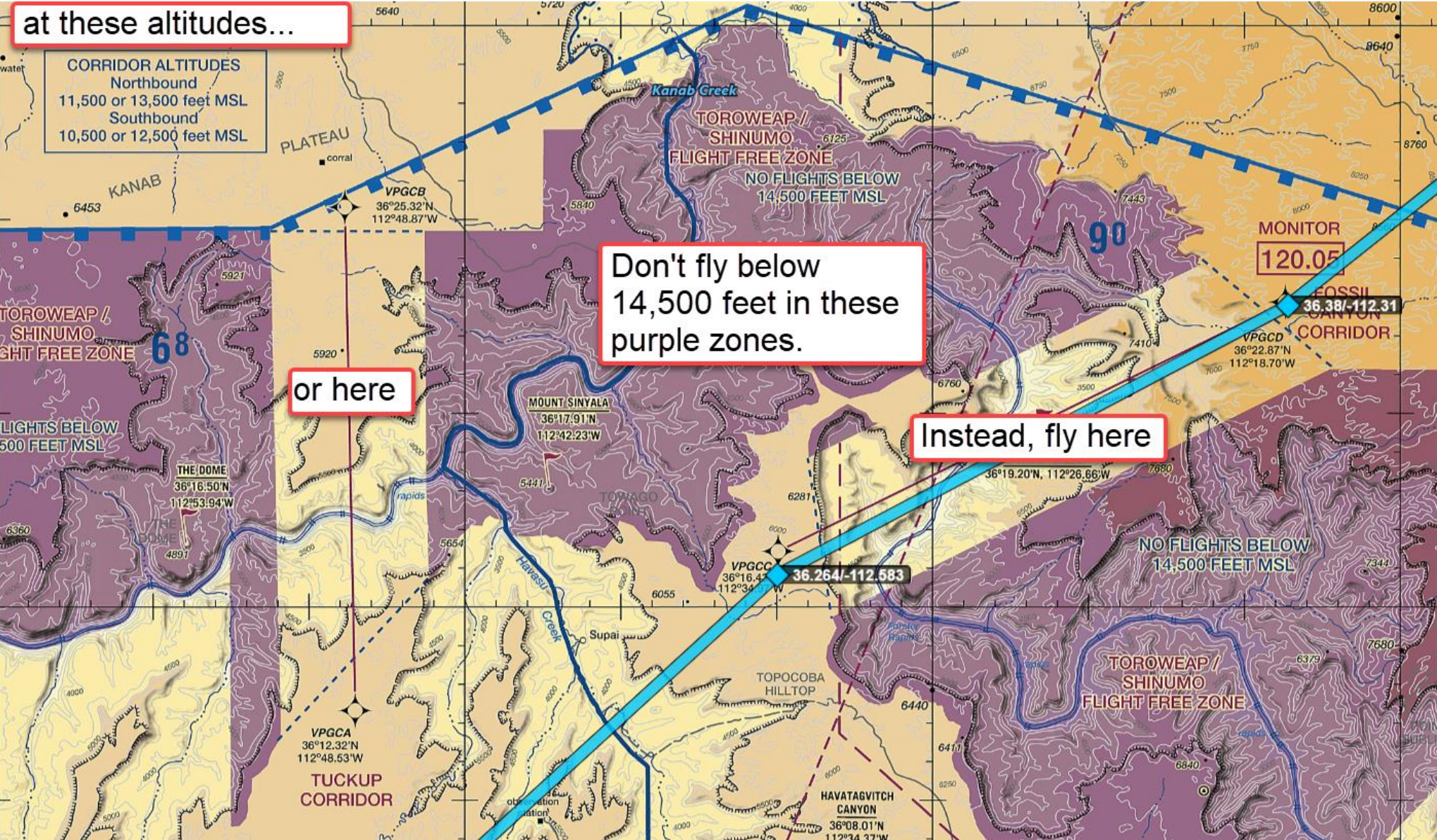
Full Route



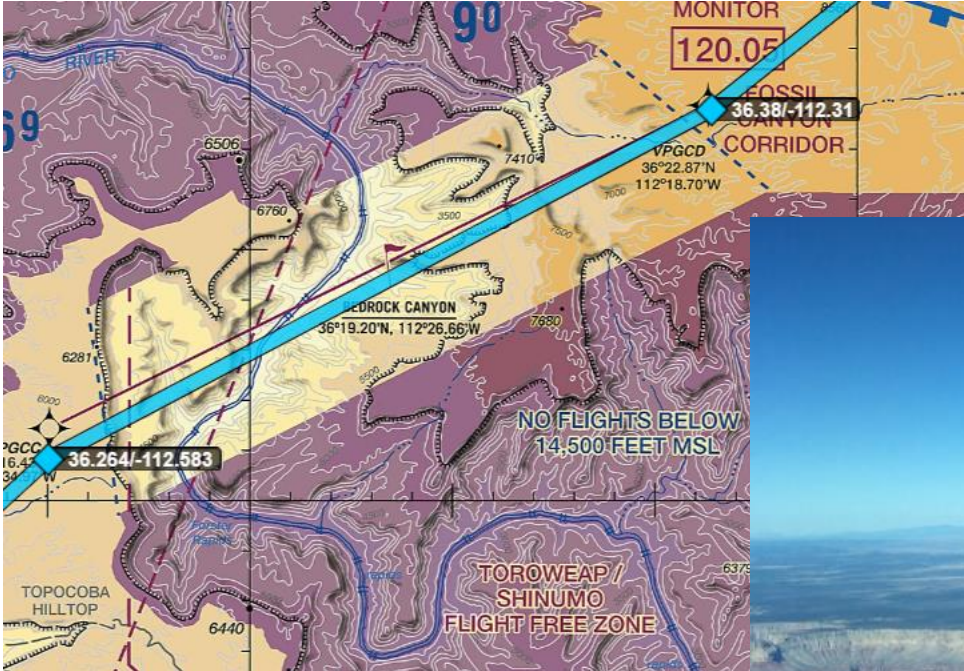
Kaibab Plateau approaching North Rim Grand Canyon



Grand Canyon Special Flight Rules Area



Fossil Canyon Corridor (Corridor endpoints don't appear in my GPS... but can easily be drawn in ForeFlight)



Safety

- Leave your route and intended arrival time with trusted friends
 - Decide in advance when (**and who**) they will call for search and rescue
- Take a personal locator beacon and emergency supplies
 - If you land off-airport on this flight, you have **95%** odds of **zero** cell coverage
 - Shelter and first-aid are key. You can survive 3 days without water. **Exposure can kill you in 3 hours**. Stay put, stay alive, make yourself easy to find.
- Use flight following – Denver Center can communicate with you along most of this route if you are above 10,000
- Plan for outs – Goulding (UT25), Page (PGA), Grand Canyon (GCN), Grand Canyon Caverns (L37)

You will be over the Grand Canyon for only **5 minutes** – the journey is the destination.

